

PUBLIC FARM & FARM EQUIPMENT AUCTION

10 Acre Dairy Farm w/ 2 Story, 4 Bedroom Home
Tractors, Skidloader & Other Farm Equipment
Saturday, April 28, 2018 @ 10:00 A.M., Equipment @ 10:45 A.M.

20 Taylor Mill Rd., Belleville, PA17004- Mifflin County



Directions: From Route 322, take 655 towards Belleville, turn left onto Taylor Mill Road and the property is on the right.

Property Description: 10 acre dairy farm in the heart of Big Valley with a 2 story, 4 bedroom home. Dairy facilities consist of 40 x 193, 70 cow tie-stall barn; 4 x 6 stalls with Mayo cow mattresses; two inch stainless pipe line; 1,600 gal. Mueller bulk tank; 52 x 96 heifer barn (new in 2013); 30 x 52 machine shed/shop (new in 2013); 42 x 100 hay shed; 56 x 56 dry cow barn (new in 2013); 30 x 60 calf barn (in process of remodeling); 16,000 sq. ft. concrete barn yard; feed storage includes: 16 x 70 stave silo, 20 x 70 stave silo (w/ VanDale unloaders), 17 ton feed bin and 7 ton feed bin. The property is in excellent condition, turn-key facility in an excellent agricultural community. Adjacent 60 acres may be optional for new buyer to rent.

Open House: Call Matthew Bergey at 570-412-0304 or Jake Yoder at 717-513-5386 for more information or a private showing.

Terms: \$40,000 deposit day of auction. 1% Transfer taxes split equally between buyer & seller. Real estate taxes to be prorated from settlement day. Settlement on or before 45 days. Taxes are \$3,631.

Attention Realtors: 1% Broker Participation offered to Realtors with a buyer, your buyers must be preregistered, 48 hours prior to auction.



Farm Equipment: Tractors: JD 620 - 4,563 hrs. restored in 2010; Massy Ferguson 1130 - 665 hrs. on engine rebuild; New Holland LS 160 Skidloader w/ 8300 hrs., new tires & engine rebuild & hydraulic pump & hoses in July of 2017, has 4 attachments - (2) buckets, manure fork, & bale spear; 20' custom fab gooseneck stock trailer; 8 Surge/Delaval milker units; 710 Pequea Tedder; NH 256 bar rake; NH 1411 discbine; NH 165 manure spreader; Wic Bale Chopper; 28' feeder wagon; Jamesway manure agitator (new); 7' woods rotary mower; 610 Rissler TMR mixer; (45 bushel) TMR mixer; Approx. 18 calf hutches; (2) wooden feed carts; 925 tons corn silage.

Terms of Payment for Equipment: Good check.

For additional pictures go to www.beiler-campbellauctions.com or www.auctionzip.com

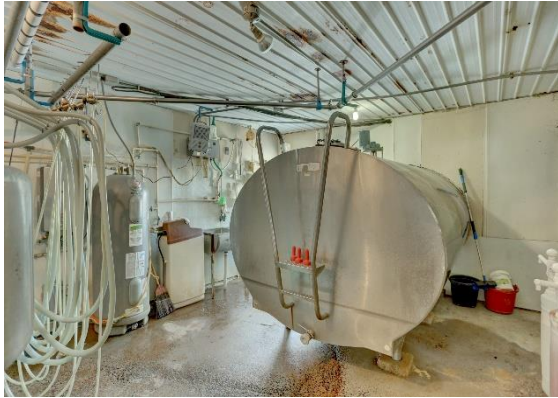
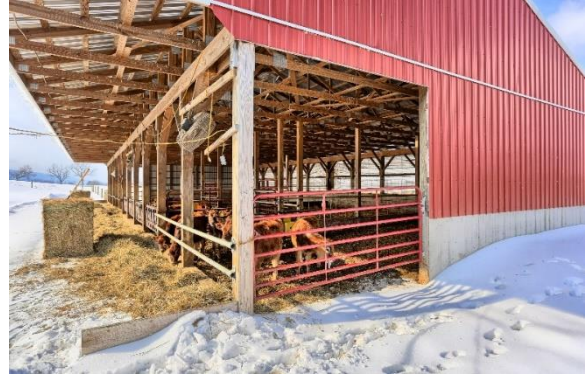
BEILER-CAMPBELL
AUCTION SERVICES



www.beiler-campbellauctions.com • 888-209-6160

Auctioneers:

Jake Yoder AU#005851 • 717-513-5386
Matthew Bergey AA#019473 • 570-412-0304
Seller: Tucker Hardy • 814-215-1789
Attorney: Richard Gingrich • 717-248-6751



For additional pictures go to www.beiler-campbellauctions.com or www.auctionzip.com

BEILER-CAMPBELL
AUCTION SERVICES



www.beiler-campbellauctions.com • 888-209-6160



Auctioneers:

Jake Yoder AU#005851 • 717-513-5386

Matthew Bergey AA#019473 • 570-412-0304

Seller: Tucker Hardy • 814-215-1789

Attorney: Richard Gingrich • 717-248-6751