

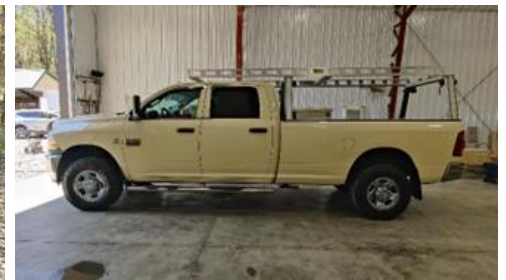
# SIDES RUN CONSTRUCTION LIQUIDATION AUCTION

Construction Equipment • Tools

Onsite Friday, July 22, 2022 @ 9:00 A.M.

Online Bidding Available for Equipment @ 11:00 A.M.

Auction Location: L & L Roofing Systems-2220 Manor Rd. Clymer, PA 15728- Indiana Co.



**Directions:** From Rt. 119 close to Indiana take Rt. 422 E for approx. 6 mi. Take the PA 553 exit toward Penn Run. In 6.1 mi. turn left on PA 403 N. In 0.6 mi. turn left on Manor Rd. In 0.2 mi. the auction is on the left.

**Trucks & Trailers (online bidding available):** Ram 3500 Truck- 2011-Cummins Turbo Diesel, Good condition; Ladder Rack - System One- Aluminum; Truck Box-aluminum-8 ft.; Dodge Ram Truck 3500 with Cummins turbo diesel 2004; Trailer- Continental Cargo- Construction; Kubota Skid Loader SVL90-2; Skid Loader New Holland LS180; Goose Neck Trailer- Aluminum- Eby 8.5 x 25 ft; Trailer -Steel -Belmont; Telehandler- Highlander- Lull; Excavator- Volvo EC35C; Dump Trailer, steel bed, PJ Trailer; Trailer - Box Type.

**Truck & Trailer Accessories:** Stillwell Hydraulic trailer jack; 2" ratchet straps; Smarty Tuner JR67 for Cummins diesel; damaged Dodge tailgate w/working camera eye.

**Skidloader Attachements:** Bradco: 7' Paladin bucket w/teeth serial # 485150; 78" Paladin bucket w/teeth serial # 485184; 6' bucket- low profile; 6' bucket- low profile w/teeth; Tele-Boom 200; McMillen auger X2475 w/18" bit; 2 pairs of pallet forks; 4'x20' steel platform with rail.

**Ladders:** Werner MT13 ladder; 16', 24' & 28' Werner aluminum extension ladders; Werner 10' fiberglass stepladder; Werner 8' fiberglass stepladder; 3- 6' Werner fiberglass ladders; 4' Werner fiberglass ladder; 2- Werner 3' ladders; 2- Werner 2' ladders; Werner MT26 ladder; Ladder-Max stabilizer; 1 pair Pro-Jack ladder jacks 24' w/6' extension; Stinson ladder jacks.

For additional pictures go to [www.beiler-campbellauctions.com](http://www.beiler-campbellauctions.com) or [www.GoToAuction.com](http://www.GoToAuction.com) or [www.auctionzip.com](http://www.auctionzip.com) ID# 23383. For online bidding go to <https://bit.ly/Beiler-CampbellAuctionServices>

**BEILER-CAMPBELL**  
AUCTION SERVICES



AY# 002026

[www.beiler-campbellauctions.com](http://www.beiler-campbellauctions.com) • 888-209-6160

**Auctioneers:** J. Meryl Stoltzfus

AU#005403 Ph. 717-629-6036

Elvin Stoltzfus AA#019514 Ph. 610-333-5447

**Sellers:** Sides Run Construction, LLC

Ph. 814-691-2131





**Tools:** Powermatic table saw model 66 serial # 89661515; 15" Grizzly planer GO4532 spiral cutterhead; 2- 12" DeWalt sliding compound saw; 10" Makita chop saw; 10" Makita skill saw; 10" DeWalt saw; 8" DeWalt skill saw; 12' Werner aluminum saw fence; Stihl MS 193C chainsaw; Stihl PG55 blower; J air compressor; Jenny air compressor- 3 years old; 155,000 BTU Reddy heater; L.P. Reddy heater; Swenson shear serial #33781; Binks 5 gal. sprayer; Bauer shop vac; halogen flood lights; 2- 12'6" Tapco Pro 14 bender & Tapco Pro III bender; Leica Disto S910 laser distance meter w/ legs case, charger, and instructions; 20 volt DeWalt DW074LR transit; DW090 DeWalt transit level; Large selection of 18 volt & 20 volt DeWalt tools; Milwaukee 18 volt tools; Porter Cable router; 6- Paslode framing nailers; Bosch hammer drill; 2- Makita Quick Drive Pro systems; 2- Bostitch Strapshot; LB10 laser; Bostitch cap staplers; Bostitch staplers; levels- 2', 4', 6', 7' & 12'; 3- Safe Waze self retracting lanyards; Kobalt tile cutter; box of drywall tools; box of tile tools; linoleum roller; box of pipe tools; drill bits; sawsall blades; tin snips; tape measures; sockets & wrenches; ODE gutter punch; shingle shovels; roofing brackets; diesel & gas cans; air hoses; electric cords.

**Concrete Tools:** Stihl TS 420 concrete saw; Wacker WP 1550 tamper; Magflo 12' power screed (Screed King); 6', 8' & 10' hand screeds; 36" stow trowler; rebar bender/cutter; 2 Extreme concrete sprayers; 1 Xylene; concrete knee pads.

**Lumber & Building Supplies:** Contractor lumber 2x4s, 2x6s, etc; Furniture grade lumber- oak, hickory, cherry, poplar; various colors of new metal corners; 3- garage doors 2- 10'x10' brown and 1- 12'x10' white; LED lighting; 100 amp wire (2/0, 2/0, 2/0, 1/0); large selection of Fastgrip screws, etc. including other fasteners & building supplies.

**Auctioneer's Note:** This is only a partial list of items. This is a complete liquidation of very clean and well-maintained construction equipment and tools.

**Terms:** Payment by cash, check or credit card. All items to be paid in full prior to removal from the premises. On-site bidders: 5% buyer's premium. Online bidders: 7% buyer's premium. Additional 3% buyer's premium for credit card purchases.

For additional pictures go to [www.beiler-campbellauctions.com](http://www.beiler-campbellauctions.com) or [www.GoToAuction.com](http://www.GoToAuction.com) or [www.auctionzip.com](http://www.auctionzip.com) ID# 23383

**BEILER-CAMPBELL**  
AUCTION SERVICES



AY# 002026

[www.beiler-campbellauctions.com](http://www.beiler-campbellauctions.com) • 888-209-6160

**Auctioneers:** J. Meryl Stoltzfus  
AU#005403 Ph. 717-629-6036  
Elvin Stoltzfus AA#019514 Ph. 610-333-5447  
**Sellers:** Sides Run Construction, LLC  
Ph. 814-691-2131

