

Public Auction

Liquidation Auction for Kleinz Construction Inc.

JCB Excavator • Case Wheel Loader • NH Skidloaders Chevy Dump Trucks & Pickups • Equipment Trailers Case D310G Dozer • Trencher • Rollers • Shop Tools Thursday, July 21, 2022 @ 8:30 AM

433 Liberty Lane, Kirkwood PA 17536 - Lancaster Co.

Directions: From Kirkwood, Route 472 S, to right onto Mt Eden Rd. to right onto Liberty Lane to property on right.



Trucks, & Trailers: '01 GMC 3500HD truck w/ 7 1/2' steel dump bed & fuel tank w/ pump, dual wheels, 207K miles, plow mounts & pintal hitch; '95 GMC Topkick truck 30,000 GVWR w/ 12ft steel dump body w/ tarp & pintal hitch 94K miles; '76 GMC tandem axle 25,990 GVWR truck w/ 12ft steel dump & tarp; '98 GMC 3500 SL dually truck w/ 8' steel dump body, 20K miles; '88 Chevy 1500 truck w/ 8.5' steel bed, 4WD 228K miles; '04 Econoline 24ft 12 Ton tilt equipment trailer w/ LED lights; '10 Kaufman 23' tilt equipment trailer 14,000 LBS; '87 Centerville 14' skid loader trailer 9650 GVWR w/ ladder ramps; pipe trailer; '97 Pontiac Trans Sport Montana Minivan 189K miles w/ dual sliding doors; Electric Nordeco Marketeer 262 mini truck; Iceway 8' stainless steel salt spreader; Boss 9ft V-plow w/ mounts & lights; 10' wide V-plow; 10' snow plow w/ power angle; 7.5' snow plow;

Excavation & Construction Equipment: '04 JCB JZ70 ZTS excavator w/ rubber tracks, blade, 36" bucket, 4100 hours; Kubota KH-18L excavator with extend-a-hoe & 24" bucket; Case W11 articulated wheel loader; Case DH4B trencher with rock teeth, backhoe with outriggers & 18" bucket, blade, 1336 hours; NH L785 skid loader 3078 hours, rear weights, good rubber; NH L783 skid loader 5253 hours enclosed cab; Case D310G dozer 2258 hours w/ 6-way blade, ripper, winch & rubber pads; '94 Ingersoll-Rand DD-23 double smooth drum roller w/ Duetz engine 2886 hours; Bomag double smooth drum roller 748 hours; Shop built self-propelled 8' wide snowblower w/ hyd drive & lift (well made); Hanson 6' Q-tach snow blower; Horizontal drill w/ diesel engine power unit & augers; Lowe Q-tach post hole digger with augers up to 36"; Towable air compressor w/ Ford engine; numerous Skid loader Q-tach items as pallet forks, 6' hyd. broom, 7' Eliminator rake, stump grinder, NH Harley M-6 fixed angle power rake, snow blade, 6.5' rock bucket, 6.5' & 7' dirt buckets & bolt on tooth bar; 18", 24" & 36" excavator buckets; walk behind concrete saw w/ 14" blade & 8HP Honda; Case AU 600 plate tamper w/ Honda engine; Powerhorse plate tamper; VRC-60 HD jumping tamper; 8HP Honda generator; 2" & 3" trash pumps; Crusader 3500 air mover; straw blower w/ 8HP Honda; cement mixer w/ 8HP Honda; Stihl MS250 & MS290 chain saws; Stihl TS420 concrete saw; Dewalt cut off saw; Lasermark LMH, Johnson 40-6535 & Robo Toolz 26X rotary lasers; Detectron 505 locator; pressure washer;

Shop Tools & Misc.: New 5' x 8' wood bed wagon; Steiner TXF diesel tractor w/ 60" deck; (2) 30" portable fans; Delta 10" table saw; Jacobson 26" snow blower; JD 314 lawn tractor 48" deck; 5' large capacity lawn sweeper w/ 8HP Honda; (2) 15 gal 12V sprayers; running gear for bin wagon; 5' x 6' platform w/ 1000LBS hyd. hoist w/ pump, motor & battery; 7' x 12' & Q-tach mount soil screens; misc. concrete risers & lids; (2) 300 Gal tank w/ 120V pump; 24" x 8ft drain pipe; E-Z-Go golf cart w/ dump bed as is; 125 Gal. poly tank; misc. metal shelves & racks; jacks & stands; like new 12K BTU AC & Gerber toilet; refrigerator; skid ice melt; misc. truck, trailer, engine & hyd parts; misc. tarps, covers, garden, lay flat & fire hoses, cables, chains, ratchets, sewer snakes, cords & ropes; misc. tires & rims; tire machine; engine hoist & transmission jack; sand blasting pot; 10' x 16' and 12' x 16' storage sheds; 24' truck box; rolls chain link & safety fences; job box; misc electrical & plumbing items; Perc test tubes; Ridgid 300 threader; Thermal Arc 180 mig welder; drill presses & lots of bits; Hine-Werner air jack; Milwaukee & Dewalt hammer drills; power tools as, drills, impacts, recip, cir, & jig saws, shop vacs, grinders, sanders, Dewalt batteries & chargers, hand tools as shovels, rakes, digging irons, forks, brooms, mallets & hammers, pipe wrenches, pipe clamps, vises, slip & locking pliers, levels, all types of sockets, ratchets & many adj. ratcheting & open end wrenches; creepers; many organizers; ext. & step ladders; approx. 50 ton top soil; office desks & chairs; misc metal pipes, tubes & some scrap;

Auctioneers Notes: Due to the unfortunate passing of owner Dennis Kleinz, the decision was made to liquidate all construction & excavation equipment, shop tools and supplies.

For more pictures go to www.beiler-campbellauctions.com or www.auctionzip.com or www.gotoauction.com



BEILER-CAMPBELL
AUCTION SERVICES
www.beiler-campbellauctions.com • 888-209-6160



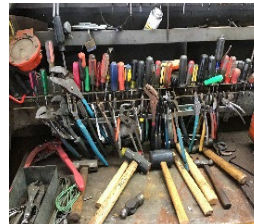
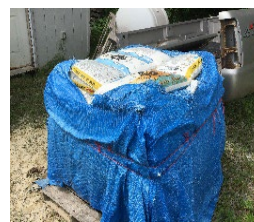
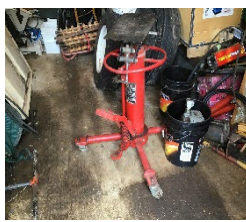
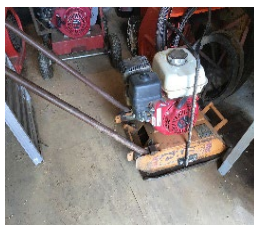
Auctioneers:

Harold Martin 717 738-4228 AA019488

Christ Taylor 717-371-1915 AU 005421

Seller: Kleinz Construction Inc. 717-529-6145





BEILER-CAMPBELL
REALTORS & APPRAISERS