

# Public Auction

## Industrial Metalworking & Woodworking Equipment

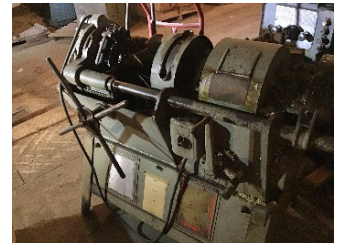
Lathes • Milling Machines • Tumblers • Threaders

Band & Rip Saws • Planers • Jointers • Sanders

Steel, Aluminum & Stainless Sheets & Bars • Motors • Fittings

### Saturday Sept. 23 @ 8:30 AM

124 Hatchery Road, Dalmatia, PA 17017 - Dauphin Co.



**Directions:** From Pillow Route 225 North to left onto Hatchery Road to auction on right

**Metal Working Equipment:** 8+ milling machines by Brown & Sharps, Diamond, Freidrich Deckel; Kearney & Trecker, Elliott, Bridgeport & Cincinnati; 14+ metal lathes by Rivett, Monarch, Reed Prentice, Cincinnati, McClean-Anderson, Heathway glass lathe, Rivett, Wade, Hardinge, and more; Tornos & other slide head lathes & wire formers; Threaders by Beaver Speed King, Tornos, Oster and others; Reid, Jones-Shipman, Milwaukee & Brown&Sharp surface grinders; Index precision grinder; Murco & other barrel tumblers; Oliver pedestal grinder; Setco tool grinder; Highland Park grinder; Johnson bandsaw; Rockwell, Buffalo & Cincinnati drill presses; Pullmax deep throat nibbler; Wiedemann turret punch; Perkins punch press; Quickwork sheet metal bender; Denison multi presses; lots of T-slot bolts, drill bits, cutters, collets & tooling; C-clamps; many more specialized machines & parts;

**Woodworking Equipment:** (New) Grizzly Industrial table saw; (new) Hitachi Super Surfacers PF110F; Straightline rip saw; Porter Co 30" planer; Powermatic 24" planer; L. Power & Co 12" jointer; Maxwell, Delta Rockwell & DoAll bandsaws; sponge & disc sanders.

**Misc:** (new) Trane Climate Changer air handler; Weldotron heat shrink tunnel; Dayton 25HP air compressor; Ingersoll Rand air compressor w/ (2) 20HP motors; Torit dust collector; Filtrine chiller; Stratton-Hydro crane; Enerpac & Manley shop presses; finishing booth; Thermocraft Industrial oven; Whitlock vacuum pump; Sheldon key machine; Bostitch Stapler; lots misc drawer cabinets; many storage cabinets & bins; 3/4" - 3" galv. pipes; 1/2" - 6" cold roll steel round; lots flat, round, sq & hex steel bars; misc stainless flats; alum solid rounds & squares; steel, aluminum & stainless sheets; misc expanded metal; steel racks; Reliance & other motors; large amount of new industrial electrical supplies including Square D switches, boxes, breakers, & covers; rolls light & heavy electrical wires; conduits; (new) 36" attic fans; and much more

**Auctioneers Notes:** Large amount of industrial items. 10% buyer's premium. Still unpacking, come see what all we find. All information is deemed to be accurate, but not guaranteed.

For additional pictures go to [www.beiler-campbellauctions.com](http://www.beiler-campbellauctions.com) or [www.auctionzip.com](http://www.auctionzip.com) or [www.gotoauctions.com](http://www.gotoauctions.com)

**BEILER-CAMPBELL**  
AUCTION SERVICES



AY# 002026

[www.beiler-campbellauctions.com](http://www.beiler-campbellauctions.com) • 888-209-6160

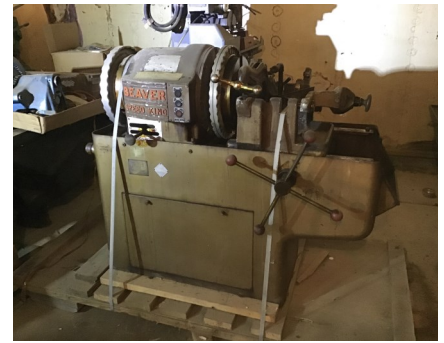
**Auctioneers:**

**Harold Martin 717-738-4228 AA#019488**

**Meryl Stoltzfus 717-629-6063 AU#005403**

**Seller: Sam Wengerd (717) 734-2006**





For additional pictures go to: [www.beiler-campbellauctions.com](http://www.beiler-campbellauctions.com) • [www.auctionzip.com](http://www.auctionzip.com) • [www.gotoauction.com](http://www.gotoauction.com)