

75.59 ACRES

PUBLIC AUCTION

Wooded | Borders State Land

Clinton County



00 Barner Lane (off E. Winter Rd) | Loganton, PA 17747

Directions: From Eastville, head west on East Winter Rd to Barner Ln on left. Watch for signs!

PROPERTY FEATURES

- Total of 75.59 +/- acres
- Mostly Wooded
- Views of Sugar Valley
- Nice Driveway
- Recent Perc Test
- Large Food Plot
- Shooting Lanes
- Trails and Tree Stands in Place
- Lots of Wildlife
- Adjacent to State Land
- Greene Twp – Zoned Ag Conservation

OPEN HOUSE

Tues. Aug.26, 1-3 pm &
Sat Aug. 30,
10:00 am-noon
For a private tour call:
Matt 570-412-0304

**AUCTION
DATE**

Friday,
**Sept 26
2025**
@ 5:00 PM

TERMS

\$40,000 down payment on the day of the auction.
Settlement on or before Nov. 26, 2025. 2% transfer tax to be
paid by the buyer. Real estate taxes to be prorated from
settlement day. **Annual Taxes \$605.**

Contact us for quick, convenient financing options.

All information is deemed accurate but not guaranteed

AUCTIONEER REMARKS. *Excellent piece of woodland that could possibly make a nice homesite or a perfect recreation property. Already set up well for hunting with many more acres of adjoining state forest land. Secluded yet easy to get to from Route 80. More pictures can be found at our website or auctionzip.com.*



BEILER-CAMPBELL
AUCTION SERVICES

beiler-campbellauctions.com • 888-209-6160 AY#002026

AUCTIONEERS

Matt Bergey A#019473

Ph. (570)-412-0304

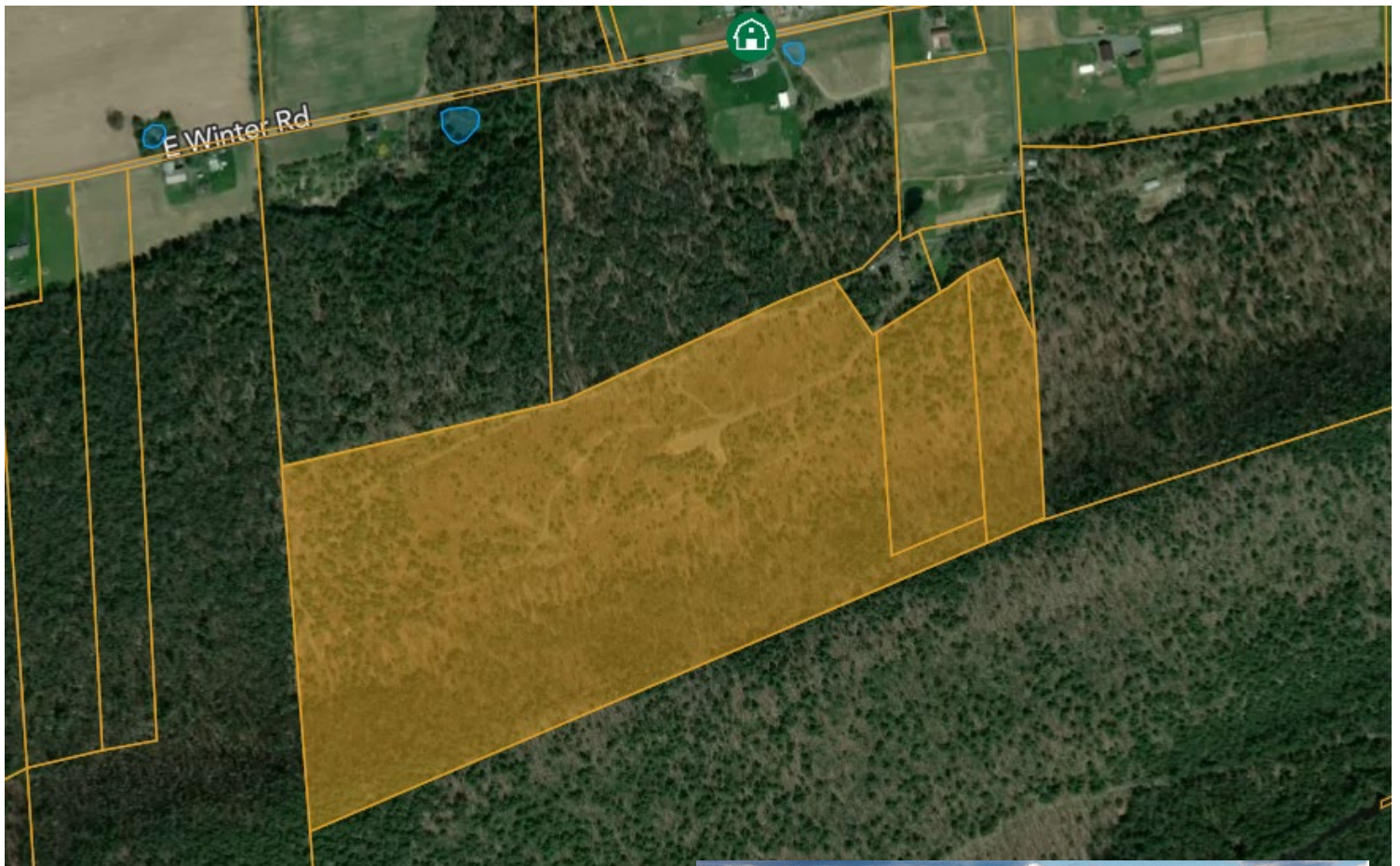
Jake Yoder AU#00585

Ph. (717)-513-5386



SELLERS

**Crist & Sarah
Stoltzfus**



For additional photos go to beiler-campbellauctions.com or GoToAuction.com or auctionzip.com ID# 23383