

76.84 ACRE FARM

PUBLIC AUCTION

4 BEDROOM HOME | DAIRY BEEF BARN | 2 PARCELS

SNYDER COUNTY



103 Pond Lane | Middleburg, PA 17842

Directions: From Rt 522 S turn right on Salem Rd. Go for 4.5 mi then turn left on Jackson Rd then sharp left on Pond Ln. Watch for signs!

PROPERTY FEATURES

PARCEL #1 (Tax ID: 13-01-025)

- 41.3 Acres
- 4 Bedroom Home
- 66'x34' Bank Barn
- 26'x70' Pole Barn
- 34'x62' Equipment Shed
- 46'x236' Dairy Beef Barn (360 Head) w/ Good Contract
- Small Pond
- Private Setting w/ Beautiful Views!
- Home Has No Electric and an Outhouse
- **Annual Taxes: \$4219**

PARCEL #2 (Tax ID: 13-01-156)

- 35.54 Acres
- Mostly Tillable w/ Small Stream
- Excellent Valley Views
- Deeded Right of Way Access
- **Annual Taxes: \$459**

(property is not enrolled in Clean & Green)

OPEN HOUSE

Tues. Sept 23, from 1-3
Sat. Sept. 27, from 10-12

For more information on the farm or
private showing, call
Jake Yoder @ 717-513-5386 or Matt
Bergey @ 570-412-0304

TERMS

\$30,000.00 deposit per parcel day of auction. Buyer
pays 2% transfer tax. Closing by December 12, 2025
or before. Crops in the fields are reserved for 2025
harvest.

Parcels will be offered individually only.
*All information is deemed accurate but not
guaranteed.*

**AUCTION
DATE**
Saturday,
OCTOBER 18
2025
@ 11:00 AM



BEILER-CAMPBELL
AUCTION SERVICES

beiler-campbellauctions.com • 888-209-6160 AY#002026

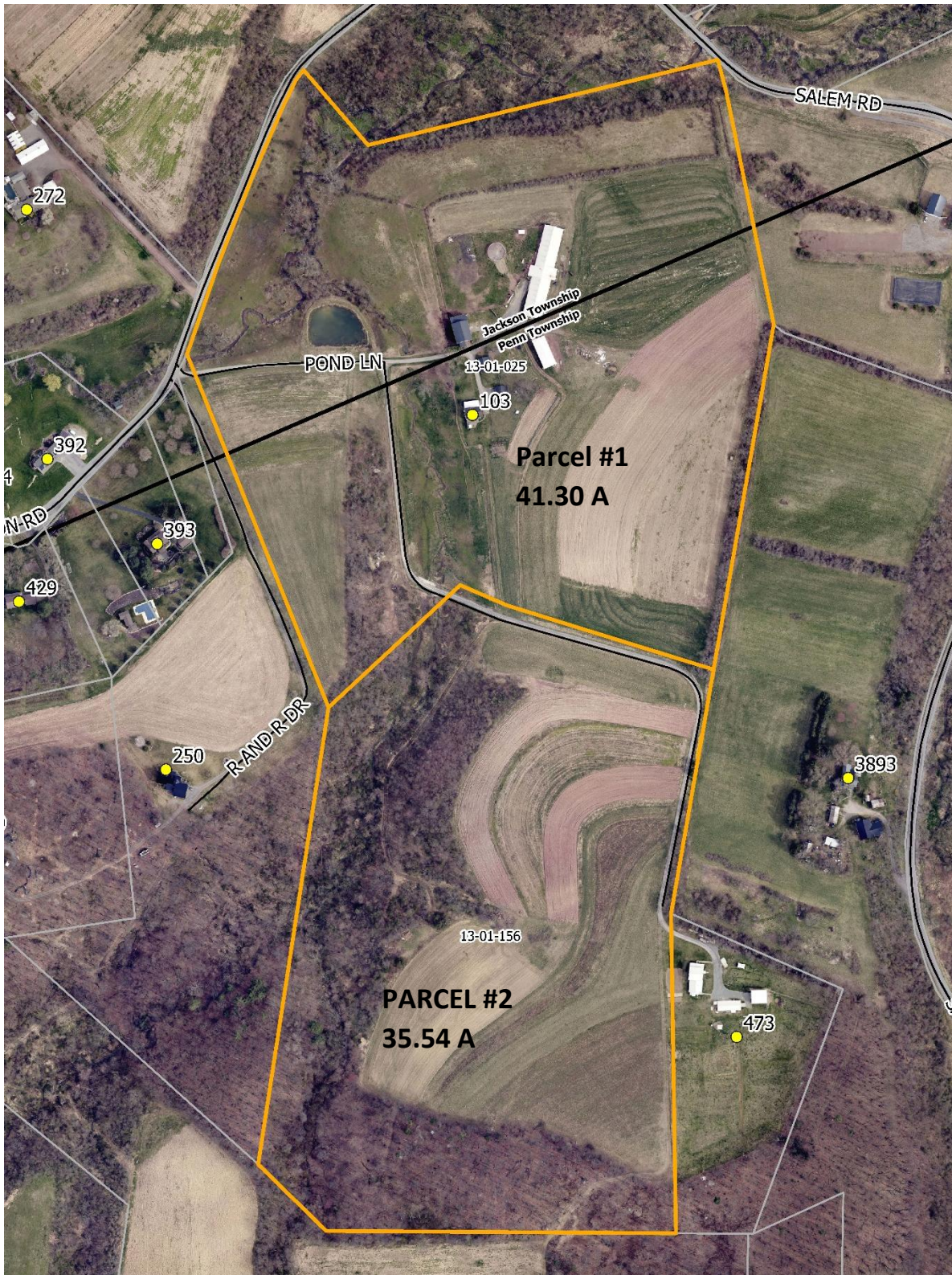
AUCTIONEERS

Jake Yoder AU#005851
Ph 717-513-5386
Matt Bergey AA#019473
Ph 570-412-0304



SELLERS

Eli C Hostetler
Rebecca A Hostetler



For additional photos go to beiler-campbellauctions.com or GoToAuction.com or auctionzip.com ID# 23383



BEILER-CAMPBELL
AUCTION SERVICES

beiler-campbellauctions.com • 888-209-6160 AY#002026

AUCTIONEERS

Jake Yoder AU#005851
Ph 717-513-5386
Matt Bergey AA#019473
Ph 570-412-0304



SELLERS

Eli C Hostetler
Rebecca A Hostetler