

# 1.63 ACRES

# PUBLIC AUCTION

HOUSE | GARAGE | SHOP | PERSONAL PROPERTY

**PERRY COUNTY**



**343 Keystone Way | New Bloomfield, PA 17068**

Directions: From US 322/22 take the Newport exit, PA-34 S for 6.5 miles to sign on property.

## PROPERTY FEATURES

- 2-bedroom, 2-bath home on 1.63-acre corner lot
- Cozy eat-in kitchen
- Large front porch with scenic countryside views
- Full basement
- 24' x 30' detached garage
- Storage barn
- 16' x 20' heated woodworking shop
- Located 5 minutes from Little Buffalo State Park
- 10 minutes from US 322/22

## GUNS

Savage model 16, 243 cal., bolt action, rifle w/ Nikon scope, Winchester pump action, 20 ga., shot gun, Winchester, model 94 .30, lever action rifle, Winchester model 61, 22 cal., pump action, rifle, with Weaver scope. Antique 32 cal. 5 shot Smith & Wesson revolver. Several antique hunting licenses.

## OPEN HOUSE

Wed. August 20, 6-7 P.M. &  
Tue. Sept. 2, 6-7 P.M.  
For a private tour call:  
Gerald 717-582-6589  
Meryl 717-629-6036

## TERMS

\$15,000 down payment on the day of the auction. Settlement on or before November 19, 2025. 2% transfer tax to be paid by the buyer. Real estate taxes to be prorated from settlement day.

**Estimated Annual Taxes \$1,286.00**

Contact us for quick, convenient financing options, including down payment and bridge loans.

*All information is deemed accurate but not guaranteed*

**AUCTION  
DATE**  
Saturday  
**SEPTEMBER 20,  
2025**

Personal Property  
@ 9:00 AM  
Real Estate  
@ 12:00 PM

**AUCTIONEER REMARKS** *Unique home on 1.63 acre lot in the peaceful outskirts of Perry County's county seat. Built in 1940 around an antique Susquehanna and Western Railroad car, this charming residence offers a blend of history and character. Enjoy quiet rural living with quick access to parks, schools, and public services in a welcoming small-town community.*



**BEILER-CAMPBELL**  
AUCTION SERVICES

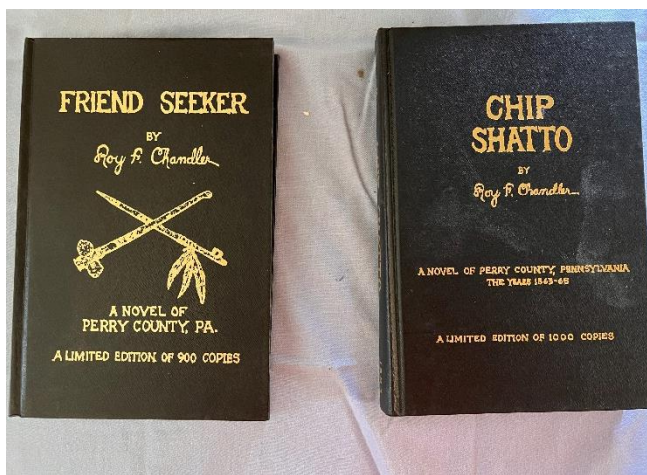
beiler-campbellauctions.com • 888-209-6160 AY#002026

**AUCTIONEER**  
**J. Meryl Stoltzfus**  
AU#005403  
Ph 717-629-6036



**SELLERS**  
**Estate of Harold L.  
& Janet M. Spotts**





## LAWN & GARDEN

Troy-Bilt tracks snow blower 9528 w/ hand warmer, Snapper snow blower w/ electric or pull start, Troy-Bilt wood chipper w/bagger, Campbell-Hausfeld power washer, Battery charged trimmers. Garden Tools, leaf and garden rakes, shovels, hoes, and other hand tools.

## WOOD SHOP & TOOLS

10" Skil band saw, Craftsman floor model drill press, 12" Delta portable planer, Craftsman oscillating spindle sander, Black & Decker table saw, Shop Smith 20" scroll saw.

Assortment of hand tools new, used and some antique. Lots of shelving.

## FURNITURE

Roll top knee hole desk, Dressers, (2) Craftmatic beds w/ control, Mirrors, Deacons bench, (2) glass front China cabinets, (2) antique glass cabinets, (1) Glass curio cabinet, marble topped cabinet. Sofa bed, recliners, padded rocking chair w/ rocking stool,

antique drop leaf table, coffee and end tables; Kitchen table with extra boards & dining room table with extra boards, kitchen chairs, antique high-chair, antique dry sink. Table lights, floor lamps, hanging art work, German made cuckoo-clock.

## COLLECTIBLES

Vintage advertising from local businesses of Perry County, Folding card table w/ business advertisement.

Perry County Sesquicentennial memorabilia. Matchbox cars, Girl Scout book and knife (1940's), records various artists, record player. Antique glassware (German, Irish), Anchor Hocking, Blue and festival glassware, Keaton's pottery. Avon with boxes. Metal irons, butter stamp, antique medical supplies. Local fire company memorabilia (New Bloomfield, Citizen, Franklin, Friendship, and Elizabethville).

*All information provided is deemed to be accurate but not guaranteed.*

Several Chandler books of Perry County History (History of Guns and Gunsmiths, History of Perry County Railroads. Chip Shatto, Friends Seeker, Books Perry County History by Dennis Hocker, Perry County Grist Mill Books by Eugene Eby, The Color of Life is Red by Edward Lee Holman, Bloomfield a Commemorative Story from 1831 to 1981, Bells & Whistles in Old Perry, several copies of Floods and High Waters 1936 and much more. Local memorabilia from Blain, Buffalo Twp, New Bloomfield, Perry County, and Pennsylvania.

## HOUSEHOLD

Tupperware and storage container, silverware, dinnerware, pots and pans, microwave, countertop appliances, Maytag washer, Whirlpool dryer, Refrigerator/freezer and 2 upright freezers.

**Auctioneer's Note:** good clean items, many more items not listed.