

Commercial Building PUBLIC AUCTION

INVESTMENT OPPORTUNITY | 0.32 ACRE LOT

PERRY COUNTY



23 W. High St. | New Bloomfield, PA 17068

PROPERTY FEATURES

- 11,090 sq ft former New Bloomfield Fire Co. Station
- Commercial space with adaptive reuse potential
- Originally built in the 1850s as a church
- Expanded with a commercial addition in 1973
- Banquet hall with air conditioning
- Commercial-grade kitchen
- 4 bathrooms
- Multiple overhead doors
- Extensive storage areas
- Ideal for conversion into retail, food service, municipal, warehouse, or mixed-use space
- Located within the borough's historical corridor
- Off-street parking lot adds convenience and value

OPEN HOUSE

Sat. Jan. 3, 1-2 P.M. &
Thur. Jan. 8, 5-6 P.M.
For a private tour call:
Gerald 717-582-6589
Meryl 717-629-6036

AUCTION DATE

Saturday,
JANUARY 31,
2026
@ 11:00 A.M.

TERMS

Absolute auction with a starting bid of \$150,000.

Down Payment: \$30,000 due on the day of the auction

Settlement: On or before March 31, 2026

Transfer Tax: 2% to be paid by the buyer.

Real Estate Taxes: Prorated from the day of settlement.

Estimated Annual Taxes: \$10,082

Convenient down payment and bridge loan options.

AUCTIONEER REMARKS A rare investment opportunity awaits in the heart of Bloomfield Borough's historic district. With its unique architectural footprint, central location, and flexible layout, this property presents a compelling opportunity for investors, developers, or end users seeking a standout asset with long-term potential in a growing small-town market.



BEILER-CAMPBELL
AUCTION SERVICES

beiler-campbellauctions.com • 888-209-6160 AY#002026

AUCTIONEER

J. Meryl Stoltzfus

AU#005403

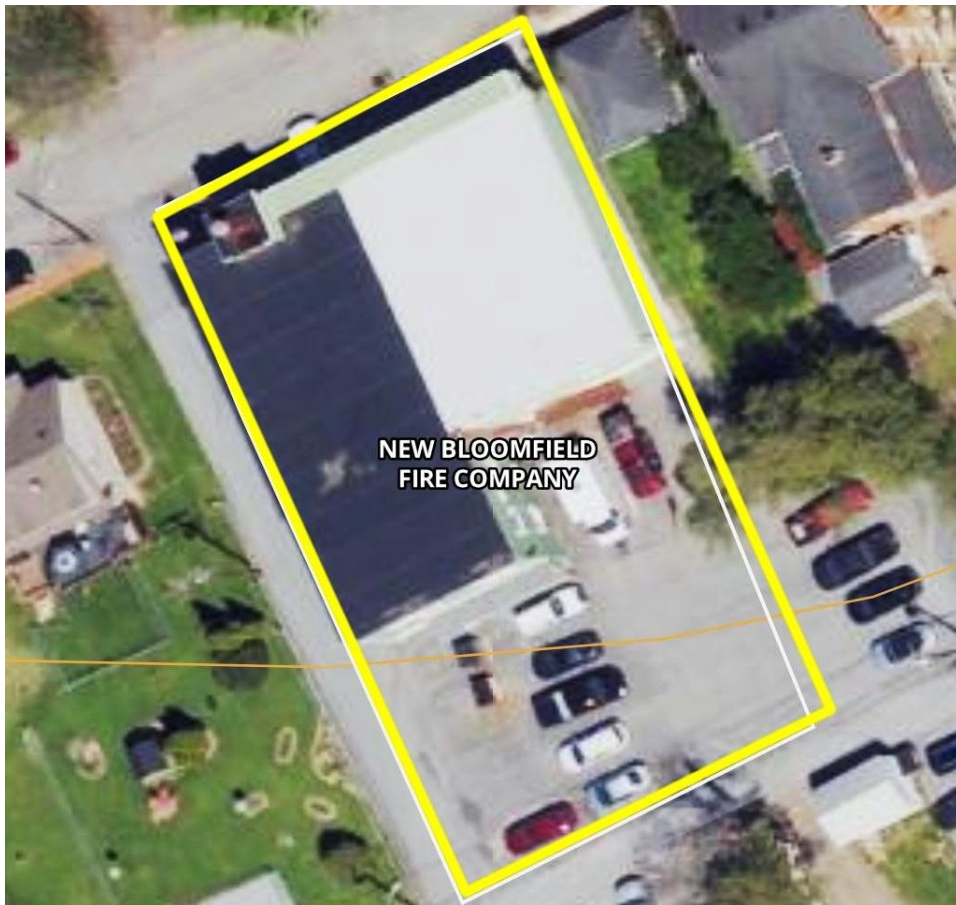
Ph 717-629-6036



SELLER

New Bloomfield Fire
Company

All information is deemed accurate but not guaranteed.



For additional photos go to beiler-campbellauctions.com or GoToAuction.com or auctionzip.com ID# 23383