

PUBLIC AUCTION

Tractors & Farm Equipment • Shop Tools
Guns • Furniture • Households
Saturday, March 7, 2026 @ 8:30 A.M.

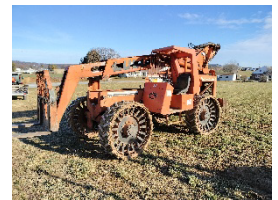
84 Hickory Lane, Ephrata, PA 17522 – Lancaster County

Directions: From Route 222, Route 322 East, to right onto Hickory Lane to Auction.

Tractors, Loaders, Combine & Harvester:

McCormick X50.40 tractor 3-speed power shift & power reverser on steel belt wheels 6200 hours; New Holland TL100 tractor 4-WD front weights 2 remotes hi-low power reverser unknown hours; New Holland TN85A tractor 4-WD 3550 hours loader ready 2-remotes front weights; John Deere 7200 tractor 2-WD power quad front weights 2 remotes 17,400 hours; Kubota L3830 tractor 4-WD shuttle shift w/ creeper 4200 hours; New Holland Boomer 40 tractor 4-WD on steel belt wheels 2975 hours loader ready 2-remotes; Lull 844 lift on steel 6840 hours 42' reach; Bobcat S205 skid loader on steel 4900 hours aux hyd; John Deere 5820 SP harvester 2-WD 5900 hours; JD 666 folding 6-row chopper head; JD 6620 Titan II Hillside combine 5551 hours; JD 643 6-row corn head; 16' JD 216 grain head; several set 4-WD & 8-lug SS belting wheels; Ride Storm wheels; JD 6466 engine;

Farm Equipment: New Holland 326 Hayliner small sq. baler w/ thrower & hyd tension (**nice**); JD 3970 harvester w/ 2-row head; (3) JD 7.5' hay heads; John Deere 530 MoCo discbine; Miller Pro 5200 forage wagon 16' (**nice**); Gehl 980 forage wagon 16'; (2) New Holland Whirl-A-Feed 40 blowers; Glencoe CC4450 7-tooth chisel plow w/ front discs; Sunflower 1211 disc 13' (**good**); Rhino 76 disc 12'; Tye 10' no-till grain drill; Hardi 500 gal sprayer w/ new pump & 60' booms; (4) gravity bin wagons; 12' flail shredder; (2) New Holland 258 rakes; (3) Dutch Bros. bale rack wagons on Stoltzfus gears; 14' & 16' flat wagons; Kinze 2000 6-row no-till corn planter; White 5100 6-row planter (as is); Calmet 3200 gal tank spreader; trailer type vertical pit pump; (3) gravity bin wagons; irrigation unit w/ 4-cyl Ford engine 2530 hours & 6" Gorman-Rupp 10 Series self-priming pump; 12' & 14' cultipackers; E Rissler 160 feed mixer w/ scales; 12' equipment trailer w/ ladder ramps; 3-Pt post hole digger w/ 12" bit; QA pallet forks, Kivel 2-prong bale spear & like new rock forks; Woods RM990 finish mower; 8' & 14' farm built dump trailers; Corn Pro cattle trailer (as is); (2) 5 1/2' x 24' steel grain bins approx. 425 bushel; like new inoculant applicator; misc. equip. parts & accessories



Auctioneers Note: A great lineup of tractors, farm equipment & shop tools. Starting with smalls at 8:30, Equipment by 12:00. See Beiler-Campbell website for details.

For more pictures go to www.beiler-campbellauctions.com or www.auctionzip.com or www.gotoauction.com



BEILER-CAMPBELL
AUCTION SERVICES

beiler-campbellauctions.com • 888-209-6160 AY#002026



Auctioneer: Harold Martin

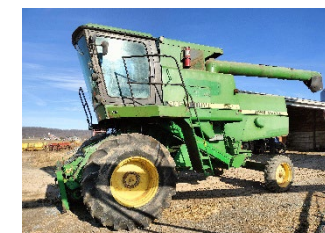
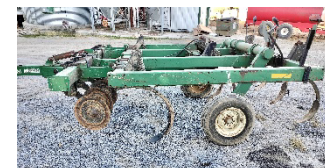
AU#006461 Ph. 717-738-4228

Sellers: James & Vera Zimmerman
717-738-4821



Farm Items, Shop Tools: 32' x 120' greenhouse frame designed for tobacco; Haugen 8' work platform; volley ball trailer w/ 6 sets nets posts lights balls cords; 11HP Tsurumi generator; pressure washer w/ 13 HP Honda; Lincoln stick welder; 30 ton shop press; misc Patz unloader parts; 25HP 3PH motor; drill press, bits & sharpener; Snap On digital & Matco Dial torque wrenches; Snap On AC gauge set; inspection cameras; new 10" vise grips; cases carb cleaner; many Snap On, Blue Point, SK & other socket, screwdriver, wrench, brake & other tool sets; Dewalt & Mil. power tools; many (some full) sets of service/repair/technical & I&T manuals for NH, JD, Case, Kubota, Ford & others; pipe threader; tap & die set; bearing & gear pullers; D1703 Kubota engine core; several sections pallet racks; 3PH panel & other boxes & misc electrical; various boxes nails & screws; 3' & 4' barn fans; (12+) new ceiling fans; roller chain; starters, turbos, bearings, hyd fittings, clamps, O-rings & many more farm & shop items too numerous to list.

Guns: Mossburg 500 ABR 12GA pump w/ slug barrel; Remington 7600 30-06 SPRG pump w/ 3-12x40 scope; Baker Batavia Special 12 GA double barrel; misc ammo;
Furniture & Misc: (2) cast iron butcher kettles; lawn cart; Giant bike; planters; (2) single beds; oak glider rocker; wardrobe; end tables; rollerblades & skates; drying racks; utensils & misc. kitchen items; decor; toys; rugs; 10 gal aquarium; magazines & more;



For more information & pictures, go to: www.beiler-campbellauctions.com or www.auctionzip.com or www.GoToAuction.com.

 **BEILER-CAMPBELL**
AUCTION SERVICES
beiler-campbellauctions.com • 888-209-6160 AY#002026



Auctioneer: Harold Martin
AU#006461 Ph. 717-738-4228
Sellers: James & Vera Zimmerman
717-738-4821