

63.18 ACRE FARM PUBLIC AUCTION

HOME | BANK BARN | DAIRY BARN | SILOS

CENTRE COUNTY



2674 Jacksonville Road | Bellefonte, PA 16823

PROPERTY FEATURES

- 63.18 acre of quality Hagerstown silt loam soils
- 4-bed, 2-bath 1,680 SF home with full basement
- 37×90 tie-stall barn w/ side curtains & 51 stalls
- 15×16 milkhouse w/ office (860-gal bulk tank)
- 40×70 two-story bank barn w/ 7 horse stalls
- 20×30 box-stall area & 36x50 heifer barn
- Two stave silos (12x35 & 16x50) and feed bin
- 60k gal manure storage & 24×42 equipment shed
- 24×40 shop with 14×21 two-story addition
- 10×15 diesel room, and 9×14 storage shed
- Approx. 10 acres pasture with hi-tensile fence
- Min. to SGL 323, Howard Dam & Bald Eagle Forest

OPEN HOUSE

Wed. Mar. 11, 10 AM-12 PM
& Sat. Mar. 14, 1-3 P.M.
For a private tour call:
Gerald 717-582-6589

**AUCTION
DATE**
Tuesday,
MARCH 31,
2026
@ 2:00 P.M.

TERMS

Down Payment: \$50,000 due on the day of the auction
Settlement: On or before May 29, 2026
Transfer Tax: 2% to be paid by the buyer.
Real Estate Taxes: Prorated from the day of settlement.
Estimated Annual Taxes: \$2,713
Convenient down payment and bridge loan options.

AUCTIONEER REMARKS *A rare chance to buy a dairy farm in Little Nittany Valley, offering strong soils, level tillable land, and good buildings for livestock and equipment. Set between Rt-26 and I-80 at exit 163, this farm has a prime location and will make a great investment with lasting value. Only 20 minutes to State College and 2 hours to Lancaster, it's a great place to make the family farm dream come true!*



BEILER-CAMPBELL
AUCTION SERVICES

beiler-campbellauctions.com • 888-209-6160 AY#002026

AUCTIONEER

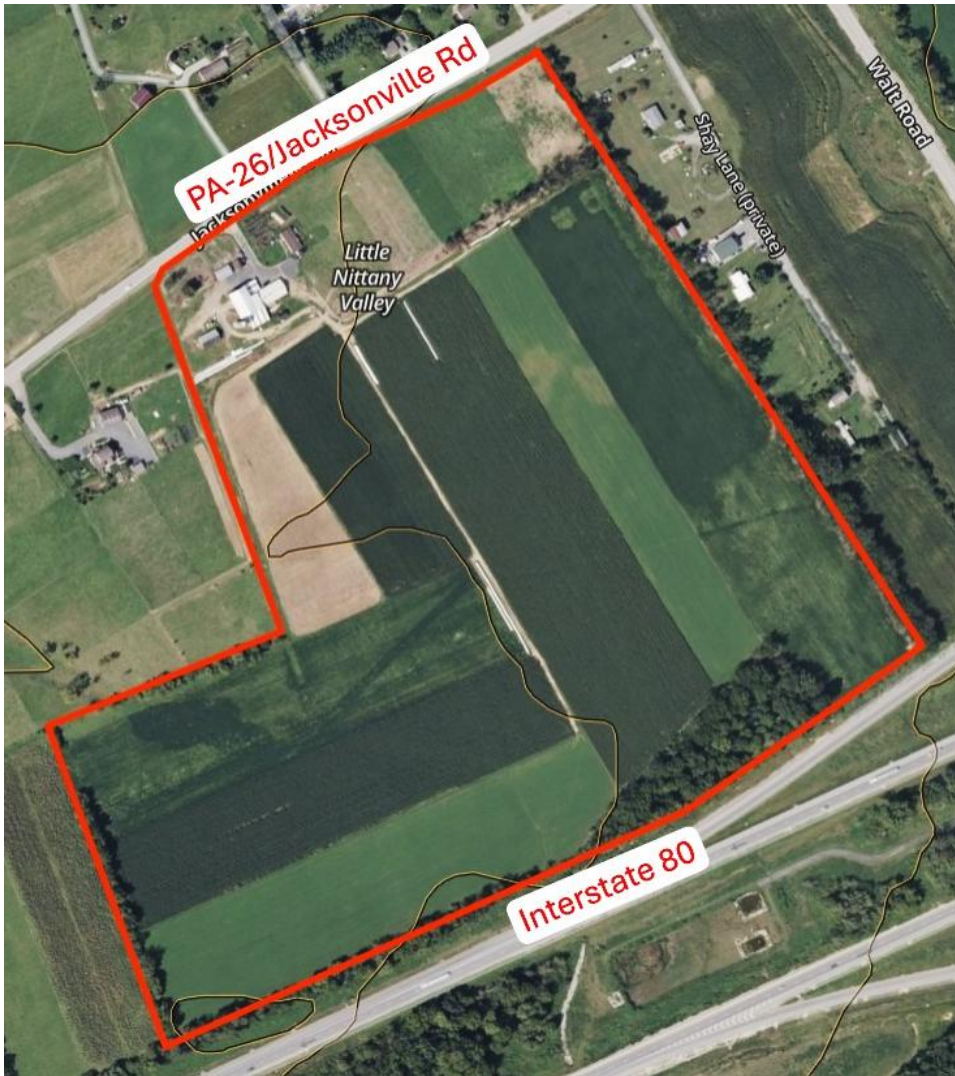
Gerald Nolt AA#19862
Ph 717-582-6589
Jake Yoder
AU#005851
Ph 717-513-5386



SELLER

Samuel & Sadie
Glick
ATTORNEY
John Miller

All information is deemed accurate but not guaranteed.



For additional photos go to beiler-campbellauctions.com or GoToAuction.com or auctionzip.com ID# 23383